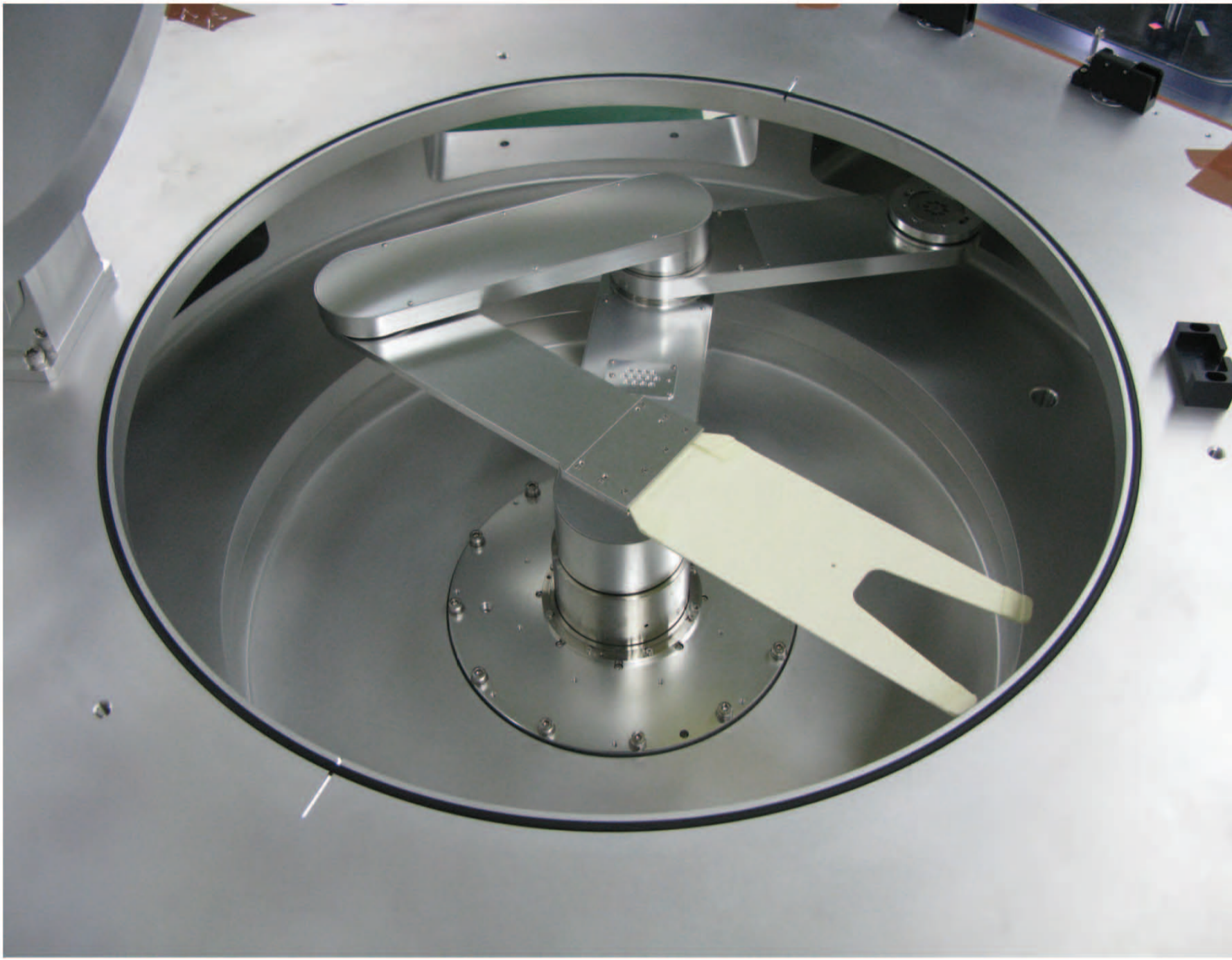


Vacuum Robot



Single Arm



Dual Arm

Features

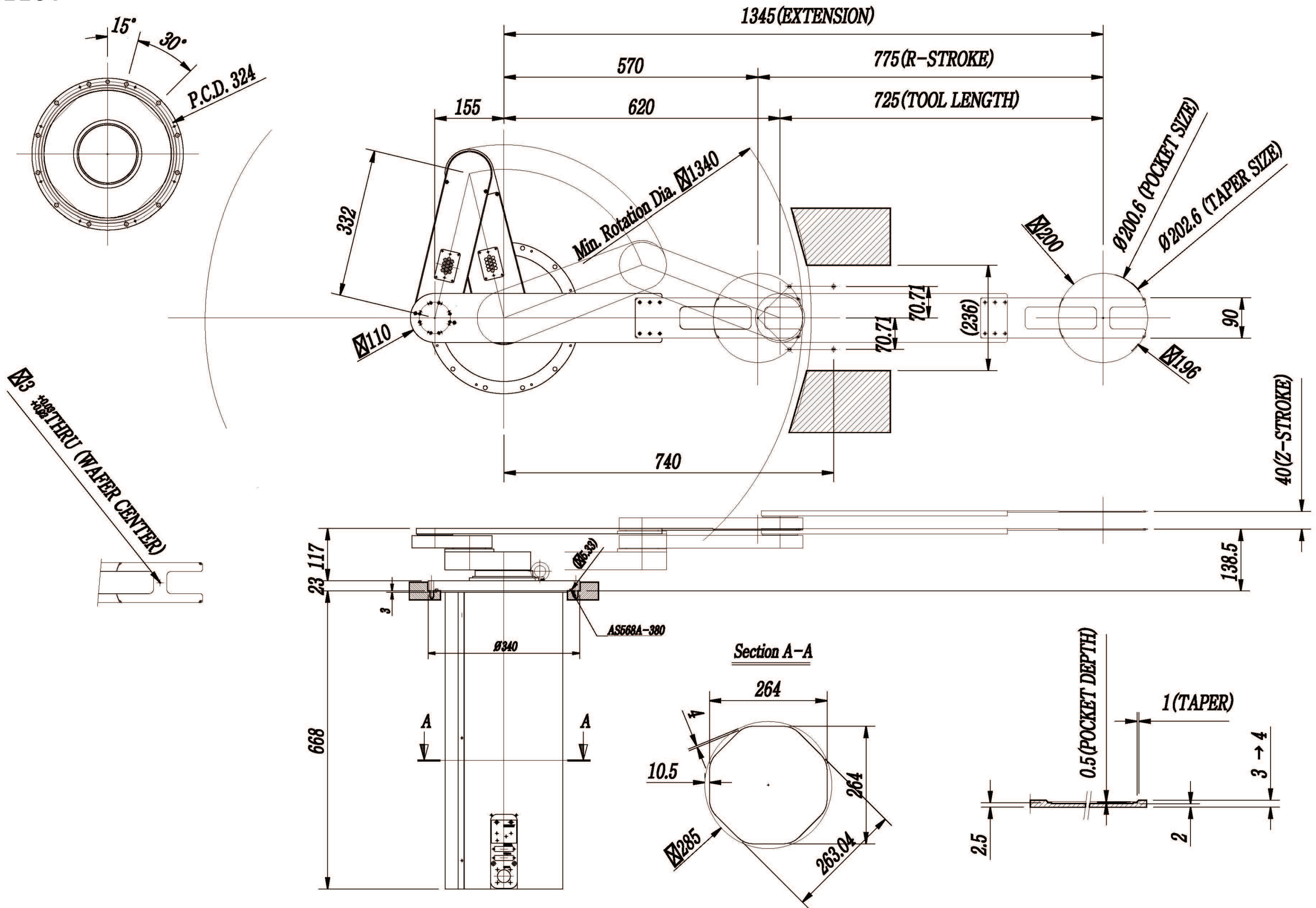
Robots and Design's Vacuum Robot is used for 1E-6Pa of vacuum environment. It has a servo motor for all axes, and uses magnetic fluid seals.

- Branch or Boomerang structure of arm is available.
- Available for long reach with handling wafer stably.
- AWC (Auto wafer centering) function is optional.

RND Vacuum Robot Specification

Contents	Detail contents		Single Arm	Dual Arm
			RT30-N110V	RT40-N120V
Performance	Work Space	R axis (or R1, R2 axis) (robot center to wafer center)	1345mm	1345mm
		T axis	370° (±185° from origin position)	370° (±185° from origin position)
		Z axis	40 mm	100 mm
	Maximum Speed (motor max. speed excluding accel/deceleration speed)	R axis	240 deg/s	240 deg/s
		T axis	180 deg/s	180 deg/s
		Z axis	42 mm/s	42 mm/s
	Repeatable Accuracy	R axis	±0.1 mm	±0.1 mm
		T axis	±0.1 mm	±0.1 mm
		Z axis	±0.1 mm	±0.1 mm
	Minimum Rotation Diameter		Ø1380	Ø1380
Blade Thickness		≤4 mm		
Grip Method		Pocket Grip		
Environment	Operation Pressure		Atmospheric pressure 5x10 ⁻³ torr	
	Operating temperature		90° or less	
General Information	Load Capacity		1.5 kgf (including gripper)	
	Arm Type		Single Arm	Dual Arm
	Control Axis		3	4
	Wafer size		8 inch or 12 inch	
Others	COMMUNICATION		Ethernet	
	Connecting to AWC sensor		Directly connected to sensor from controller	
	LINE CABLE Length (Robot <-> Controller)		3M	

Single Arm Vacuum Robot RT30-N110V



Dual Arm Vacuum Robot RT40-N120V

